

2 Finch Mews
Abbey Heights
Newcastle upon Tyne
NE15 9FG

Offers Over
£665,000



2 Finch Mews
Abbey Heights
Newcastle upon Tyne
NE15 9FG

- Absolutely stunning five bedroom detached house
- Situated within a cul-de-sac
- Family bathroom and three en-suite shower rooms
- Double driveway
- Master bedroom with a walk in wardrobe
- South facing landscaped rear garden
- Great open plan living to the rear
- Double garage with an electric roller door
- Downstairs w/c and separate utility area
- Ideal for the growing family



5



4



2



B

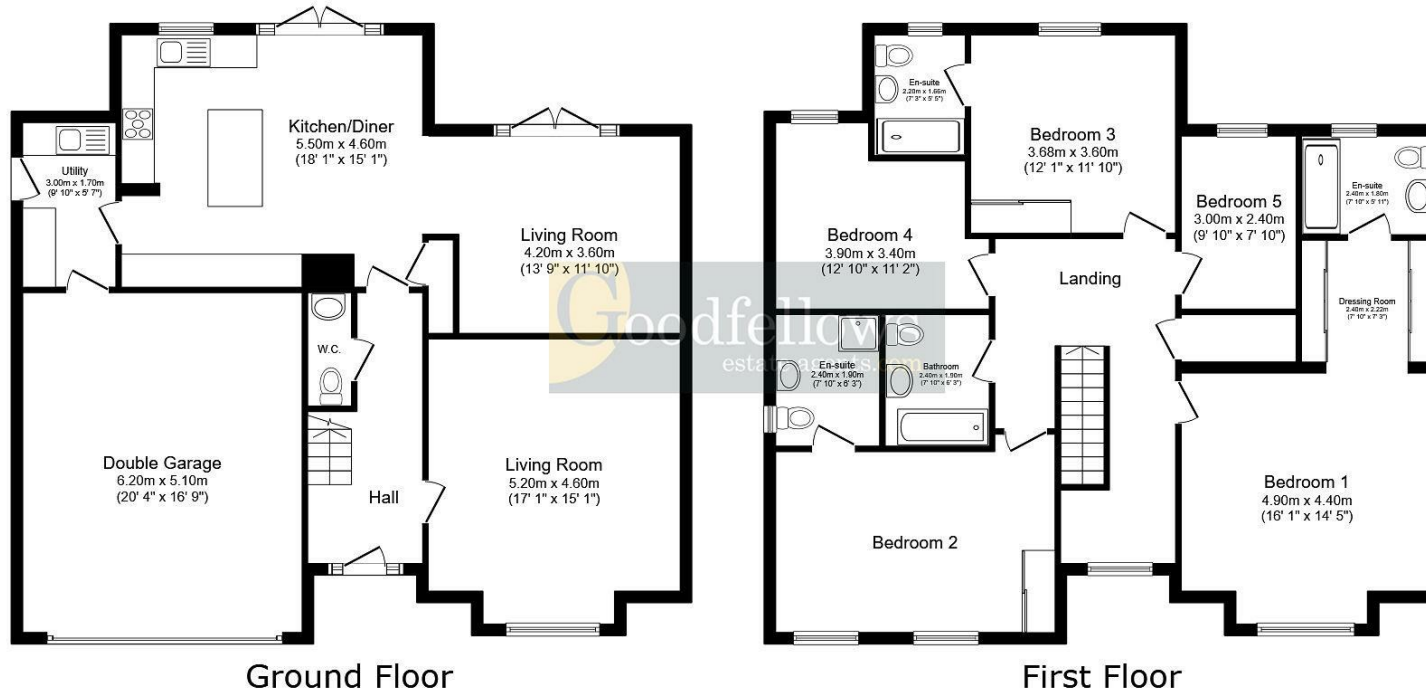






2 Finch Mews, Abbey Heights, Newcastle upon Tyne, NE15 9FG





Ground Floor

First Floor

Total floor area: 228.6 sq.m. (2,461 sq.ft.)

This floor plan is for illustrative purposes only. It is not drawn to scale. Any measurements, floor areas (including any total floor area), openings and orientations are approximate. No details are guaranteed, they cannot be relied upon for any purpose and do not form any part of any agreement. No liability is taken for any error, omission or misstatement. A party must rely upon its own inspection(s).



EPC Rating: B
Council Tax Band: F

Whilst every care has been taken to prepare these particulars, they are for guidance purposes only. All measurements are approximate and whilst every care has been taken to ensure their accuracy, they should not be relied upon and potential buyers/tenants are advised to recheck the measurements. The agent has not tested any equipment, services, fixtures or fittings and makes no representation regarding their condition.

CONTACT
 128 The Roman Way, West Denton,
 Newcastle upon Tyne, NE5 5AD
 E:
 westdenton@goodfellowsestateagents.com
 T: 0191 2677500

